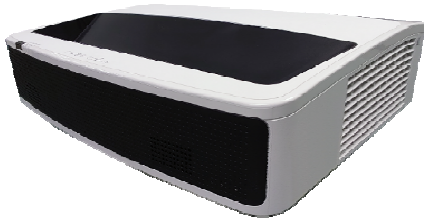




EK-360UST/361WST

WUXGA/WXGA LCD Laser Ultra Short Throw Projector



Innovative 3 LCD Projector with Laser Technology

Model	EK-360UST	EK-361WST	
Display Type	0.64" 3LCD	0.64" 3LCD	
Resolution	WUXGA (1920 x 1200)	WXGA (1280 x 800)	
Aspect Ratio	16:10	16:10	
Brightness	6,000lm*	6,000lm*	
Contrast Ratio	5,000,000 : 1	5,000,000 : 1	
Projection Light Source	Laser diode	Laser diode	
Light Source Life (Eco / Normal)	30000 / 20000 hours	30,000 / 20,000 hours	
Image Diagonal	80" - 120"	80" - 120"	
Lens (F Value / Focal length)	F1.7 / f= 2.94mm	F1.7 / f= 2.94mm	
Zoom Ratio	N/A	N/A	
Throw Distance	0.41m~0.59m	0.41m~0.59m	
Throw Ratio	0.238:1	0.238:1	
Lens Shift	N/A	N/A	
Keystone Correction	V: +/- 5 degrees, H: +/- 5 degrees, 4-Corner Correction, 6-Corner Correction, Pincushion/Barrel Correction	V: +/- 5 degrees, H: +/- 5 degrees, 4-Corner Correction, 6-Corner Correction, Pincushion/Barrel Correction	
Projection Elevation Adjustment	Up to 2 degrees	Up to 2 degrees	
Scanning Frequency	H Sync: 15 - 91 kHz, V sync: 24 - 85 Hz	H Sync: 15 - 91 kHz, V sync: 24 - 85 Hz	
Dot Clock	160 MHz	160 MHz	
Input Signals - Computer	4K(3840 x 2160@30Hz, HDMI Only) WUXGA(1920 x 1200) ~ VGA(640 x 480)	4K(3840 x 2160@30Hz, HDMI Only) WUXGA(1920 x 1200) ~ VGA(640 x 480)	
Input Signals - Video	1080 i/p, 720 p, 576 i/p, 480 i/p	1080 i/p, 720 p, 576 i/p, 480 i/p	
Terminal	HDMI In	HDMI x 2	HDMI x 2
	VGA In	D-Sub 15 x 1	D-Sub 15 x 1
	YPbPr (Component)	N/A	N/A
	Video (Composite)	N/A	N/A
	S-Video	N/A	N/A
	USB	USB Type A x 1 (Memory viewer) USB Type B x 1 (USB display / Service)	USB Type A x 1 (Memory viewer) USB Type B x 1 (USB display / Service)
	Monitor Out (VGA Out)	D-Sub 15 x 1	D-Sub 15 x 1
	Audio In	3.5mm Mini Jack x 1	3.5mm Mini Jack x 1
	Audio Out	3.5mm Mini Jack x 1	3.5mm Mini Jack x 1
	LAN	RJ45 x 1	RJ45 x 1
RS-232C	D-sub 9 x 1	D-sub 9 x 1	
Built-in Speaker	Mono 16W x 1	Mono 16W x 1	
Fan Noise (Eco / Normal)	27 dB / 37 dB	27 dB / 37 dB	
Dimensions (W x H x D)	521 x 165 x 445 mm	521 x 165 x 445 mm	
Weight	11.0 kg	11.0 kg	
Power Requirements	AC 100 - 240 V, 50/60 Hz	AC 100 - 240 V, 50/60 Hz	
Power Consumption (Eco / Normal)	230 W / 380 W	230 W / 380 W	
Thermal Dissipation	1,297 BTU	1,297 BTU	
Standard Accessories	AC Power Cord x 1, VGA cable x 1, Remote Control, Quick Start Guide, Safety Guide	AC Power Cord x 1, VGA cable x 1, Remote Control, Quick Start Guide, Safety Guide	

*Center Lumens

*Specifications is subject to change without notice

6,000 Lumens* WUXGA/WXGA (1920 x 1200) (1280 x 800)

EK-360UST/361WST is the LCD Laser Ultra Short Throw projector

EK-360UST/361WST lets you see everything on the screen in vivid color with brighter image by Laser Technology and has an advantage in a medium-sized space with this projector installed just beside the screen both conditions as internal lighting and / or sunlight from outside.

Especially, High efficiency blue laser produces pure and vivid which leads to perceived brightness increase.

The laser light source has super long life of 20,000 hours.

Key Features

- Designed For Heavy Duty Use
- Laser light source
- Side Change Filter
- Quick Power Off
- Advanced Anti-Theft Feature
- Auto Function
 - Auto Search and Auto Sync
- Six Picture Modes
 - Dynamic
 - Standard
 - Cinema
 - Blackboard
 - Color board
 - DICOM
- Built-In 16W Speaker
- Digital Zoom Adjustment
- Manual Focus Adjustment

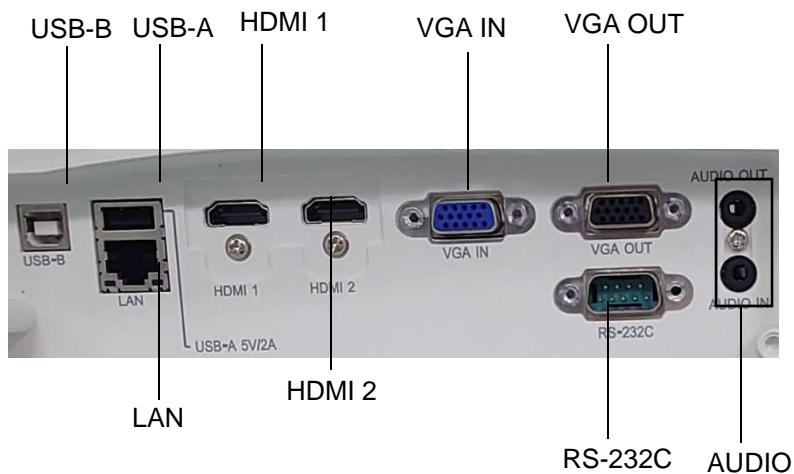
EK-360UST/361WST

WUXGA/WXGA LCD Laser
Ultra Short Throw Projector

■ Dimensions



■ Terminals



■ Throw Distance

【16:10】

Screen size	85"		90"		100"		110"		120"	
	Height	Width	Height	Width	Height	Width	Height	Width	Height	Width
		1144	1831	1212	1939	1346	2154	1481	2369	1615
A	433		456		501		546		592	
B	5		28		73		118		164	
C	147		159		182		206		230	
D	313		325		348		372		396	

【16:9】

Screen size	85"		90"		100"		110"		120"	
	Height	Width	Height	Width	Height	Width	Height	Width	Height	Width
		1058	1882	1121	1992	1245	2214	1370	2435	1494
A	445		468		515		561		608	
B	17		40		87		133		180	
C	211		226		257		289		320	
D	377		392		423		455		486	

EIKI JAPAN Co.,LTD
zip code : 661-0953
Hyogo Amagasaki Higashisonoda
4-162-1-202